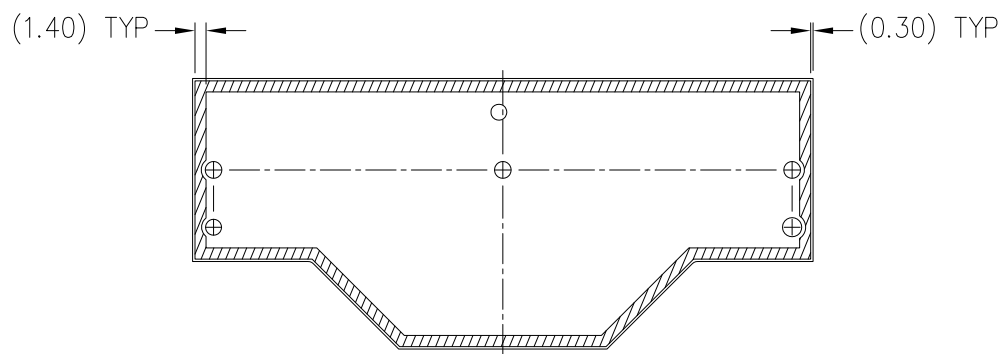
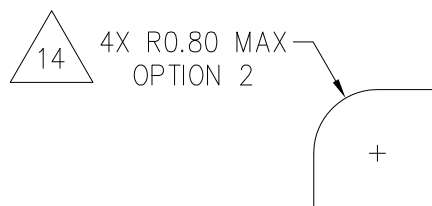
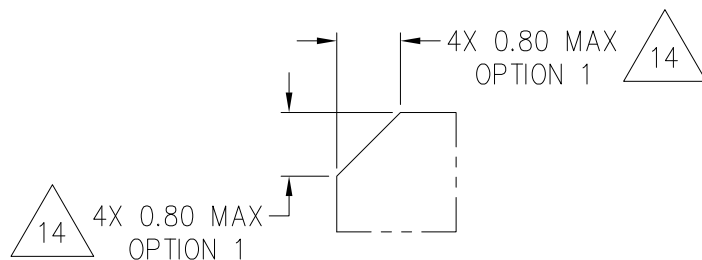


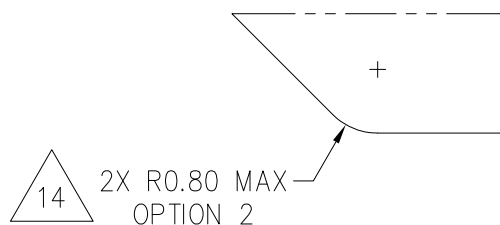
DETAIL A



REFERENCE EXPOSED GROUND STRIP (BOTH SIDES)



DETAIL B



DETAIL C

ANY COMBINATION OF CHAMFER AND RADII CAN BE USED

NOTES:

1. DIMENSIONING AND TOLERANCING CONFORM TO ASME Y14.5-2009
2. TOLERANCES ON ALL DIMENSIONS ± 0.15 UNLESS OTHERWISE SPECIFIED
3. ALL DIMENSIONS ARE MM

 DIMENSIONS APPLICABLE WHEN COMPONENTS MOUNTED ON THE MODULE
(LABEL NOT INCLUDED).

5 BORDER OF COMPONENT AREA

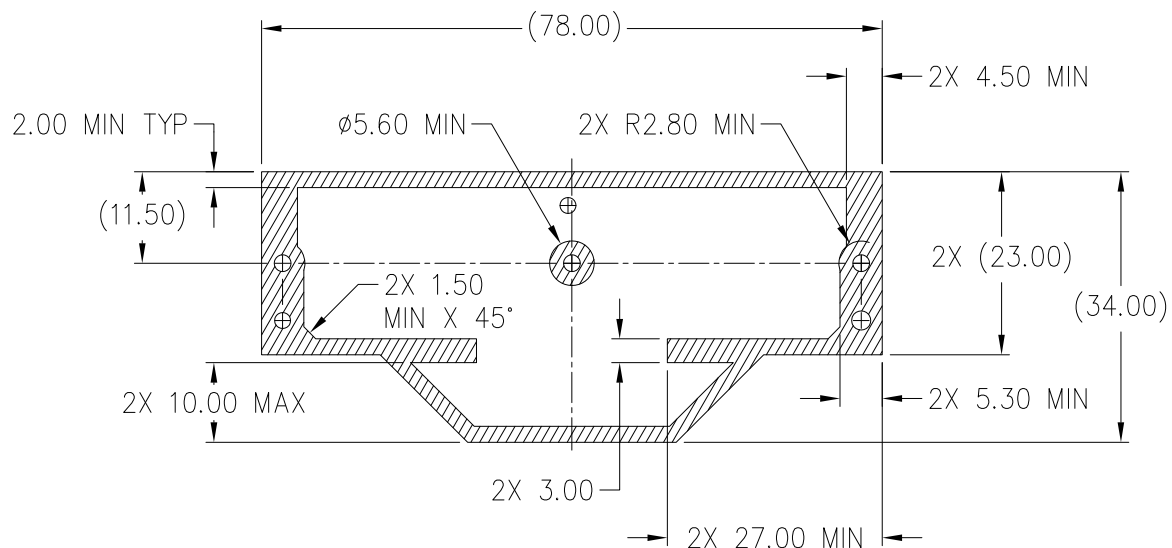
6 BORDER OF EXPOSED COPPER TOP LAYER FOR MODULE RETENTION

7 RESERVED TO ATTACH RFI/EMI SHIELD

8 SURFACE TERMINAL (AKA. CONTACT PAD)

9. REFER TO JEDEC REGISTERED OUTLINE SO-032 FOR CONNECTOR DIMENSIONS.

10. KEEPOUT FOR NON-VSS NET AREAS ON TOP LAYER ARE REQUIRED TO AVOID ANY SHORTING RISK WHEN TOP COVER IS USED FOR RETENTION



11 ONLY APPLY TO THE AREA WITH SURFACE TERMINAL (AKA. CONTACT PAD)

12

PLATING FOR SURFACE TERMINAL (AKA. CONTACT PAD) ARE:

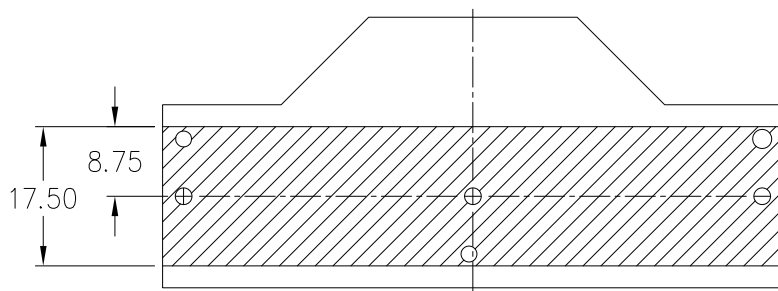
1) VARIATION Axxx: GOLD PLATING 0.05 MICROMETERS MINIMUM OVER 0.25 MICROMETERS MINIMUM PALLADIUM OVER 2.00 MICROMETERS MINIMUM NICKEL.

2) VARIATION Bxxx: GOLD PLATING 0.05 MICROMETERS MINIMUM OVER 2.00 MICROMETERS MINIMUM NICKEL.

MODULE PLATING RECOMMENDATIONS TESTED PER INDUSTRY STANDARD EIA 364-1000. RELIABILITY TESTING REQUIRES TEST MODULE, CONNECTOR, AND IDENTIFICATION OF TEST CONDITIONS.

13

SOLDER MASK IS NOT ALLOWED IN THIS AREA ON THE BOTTOM LAYER, WHERE THE SURFACE TERMINALS (AKA. CONTACT PADS) ARE PRESENT.



14

CHAMFER OR RADIUS IS OPTIONAL.

15

THE OBLONG PADS (DOUBLE-D PER JEP30-P100) ARE GROUND SHIELD CONTACTS FOR THE CAMM2 CONNECTOR. THESE ARE NOT ISOLATED COPPER PATTERNS BUT INCLUDED IN THE GROUND PLANE OF BOTTOM SURFACE.

16. SEE JESD30 FOR EXPLANATION OF PACKAGE DESIGNATOR/VARIATION.

STP (3D) FILE RECORD

3D FILE NAMES MAY EXCEED LENGTH REQUIREMENTS FOR SOME SOFTWARE TOOLS.

STP FILE NAME	DATE	ITEM NUMBER
MO-357A_XBMA-H644_I1p0_R78p0x23p0Z2p6	AUG 2023	14-219
MO-357E_XBMA-N736_I1p0_R78p0x34p0Z2p6	AUG 2025	14-232 14-237

TASK GROUP CONTRIBUTORS

ALIBABA(CHINA) CO. LTD
AMPHENOL CORPORATION
ARGOSY RESEARCH INC.
CHANGXIN MEMORY TECHNOLOGIES INC (CXMT)
DELL INC.
FOXCONN INTERCONNECT TECHNOLOGY
HEWLETT PACKARD ENTERPRISE
HP INC.
INTEL CORPORATION
LENOVO
LOTES CO., LTD
LUXSHARE-ICT, INC.
MICRON TECHNOLOGY INC.
MOLEX LLC
NEOCONIX, INC.
SAMSUNG SEMICONDUCTOR
SHENZHEN DEREN ELECTRONIC CO. LTD.
SK HYNIX INC.
SMART MODULAR TECHNOLOGIES INC.
TE CONNECTIVITY
WLCO SHENZHEN CO., LTD.

JEDEC SOLID STATE PRODUCT OUTLINE <small>Copyright © 2025 JEDEC. All rights reserved. May not be reproduced without permission.</small>	TITLE LPDDR5 CAMM2, 1.38 MM x 1.00 MM PITCH MICROELECTRONIC ASSEMBLY	NUMBER MO-357	ISSUE E	DATE AUG 2025	SHEET ii
---	---	------------------	------------	------------------	-------------

CHANGE RECORD

IF THE CHANGE INVOLVES ANY WORDS ADDED OR DELETED (EXCLUDING DELETION OF ACCIDENTALLY REPEATED WORDS), THE CHANGE IS TO BE INCLUDED BELOW. PUNCTUATION CHANGES MAY OR MAY NOT BE INCLUDED.

INITIAL ISSUE: A	DATE: AUGUST 2023	ITEM NUMBER: 14-219
------------------	-------------------	---------------------

CHANGE RECORD HISTORY:

ISSUE: B	DATE: MARCH 2024	ITEM NUMBER: 14-223
----------	------------------	---------------------

LOCATION:	CHANGED FROM:	CHANGED TO:
SHEET 1		ADD DETAIL B AND C
		ADD NOTE 11
SHEET 2		ADD NOTE 12
SHEET 3		NEW SHEET FOR DETAIL B & C
SHEETS 4 & 5		ADD NOTES 11, 12, 13, AND 14

ISSUE: C	DATE: JUNE 2024	ITEM NUMBER: 14-228
----------	-----------------	---------------------

LOCATION:	CHANGED FROM:	CHANGED TO:
SHEET 1	13.10; 26.20	13.10 TSC; 26.20 TSC
SHEET 2	5.52 BASIC	REMOVE DIMENSION: BASIC 5.52
		ADD DIMENSION: BASIC 2.76
SHEET 5		ADD NOTE 15

ISSUE: D	DATE: NOVEMBER 2024	ITEM NUMBER: 14-232
----------	---------------------	---------------------

LOCATION:	CHANGED FROM:	CHANGED TO:
SHEET 1, PACKAGE DESIGNATOR	XBMA-H644_I1p0_...	XBMA-H736_I1p0_...
SHEET 1	2X 3.00	2X (3.00)
SHEET 1 & 2		ADDED ROW R AND T
SHEET 2	644X $\phi 0.56 \pm 0.05$	736X $\phi 0.56 \pm 0.05$
SHEET 4, NOTE 4		ADDED (LABEL NOT INCLUDED)
SHEET 5		REMOVED NOTE 15

CHANGE RECORD

IF THE CHANGE INVOLVES ANY WORDS ADDED OR DELETED (EXCLUDING DELETION OF ACCIDENTALLY REPEATED WORDS), THE CHANGE IS TO BE INCLUDED BELOW. PUNCTUATION CHANGES MAY OR MAY NOT BE INCLUDED.

INITIAL ISSUE:E	DATE:AUGUST 2025	ITEM NUMBER:14-237
-----------------	------------------	--------------------

LOCATION:	CHANGED FROM:	CHANGED TO:
SHEET 1	SWAPPED R & T POSITIONS	SWAPPED R & T POSITIONS
	NOTE 12	NOTE 13 AND ADDED SOLDER MASK KEEPOUT AREA
SHEETS 1 & 6	XBMA-H736_I1p0_R78p0x 23p0Z2p6	XBMA-N736_I1p0_R78p0x 34p0Z2p6
SHEETS 2 & 5		ADDED NOTE 15
SHEET 5		ADDED NOTE 16